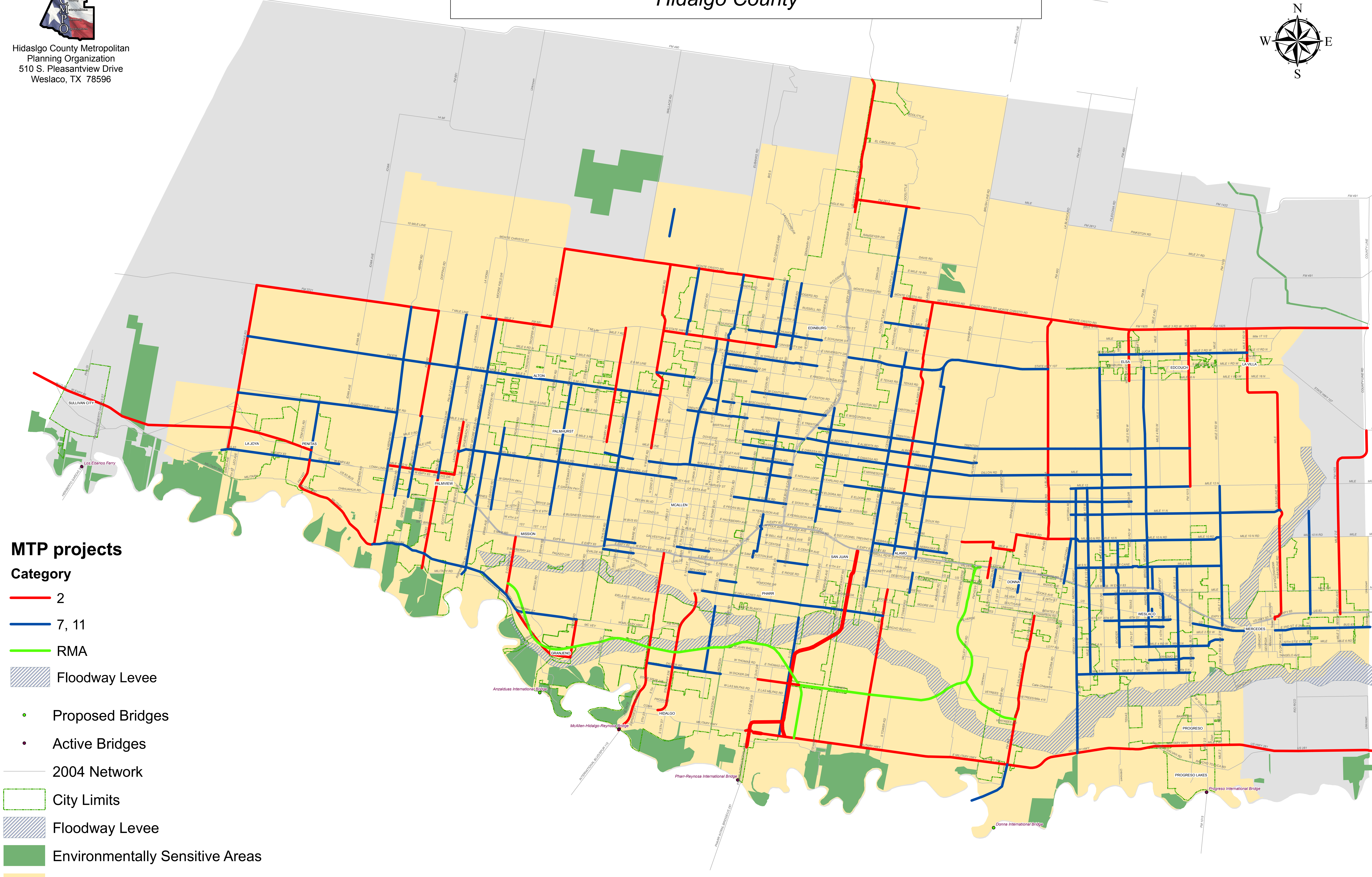
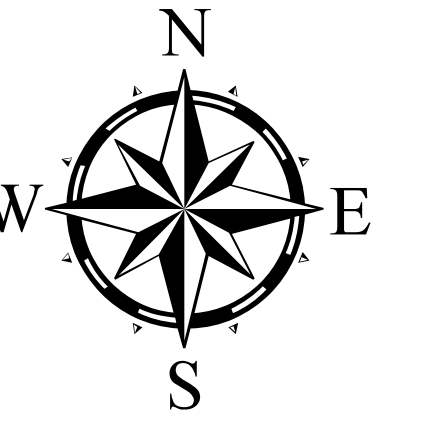


Metropolitan Transportation Plan

Hidalgo County



Hidalgo County Metropolitan Planning Organization
510 S. Pleasantview Drive
Weslaco, TX 78596



MTP projects

Category

- 2
- 7, 11
- RMA
- Floodway Levee
- Proposed Bridges
- Active Bridges
- 2004 Network
- City Limits
- Floodway Levee
- Environmentally Sensitive Areas
- Urban Area Boundary
- Metropolitan Area Boundary

